

Use of Series Industrial
for diesel fuel/kerosene and AdBlue



Series Industrial for diesel fuel and kerosene.

SERIES 530

SERIES 540

SERIES 560



For diesel fuel and kerosene 10 bar

Series Industrial for AdBlue.

SERIES 436

SERIES 437

SERIES 536

SERIES 537



For AdBlue 10 bar

Series Industrial in PAINTED STEEL

Diesel fuel and Kerosene 10 bar

swivel
seals
hose

Brass
Viton
Antistatic black
synthetic rubber

S. 560



S. 540



S. 530

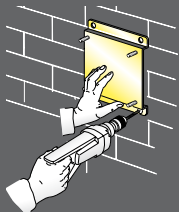


THE HOSE REELS ARE EQUIPPED WITH A UNIVERSAL HOSE STOP; THOSE WITH HOSE ARE PROVIDED WITH A 0,6 m INLET CONNECTION HOSE.

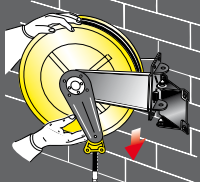
- The template supplied, facilitates drilling of the holes and therefore hose reel fixing.



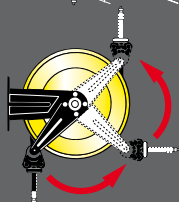
- The quick coupling support (see page 82) that facilitates installation in battery is available on request.



- The quick coupling adjustable support (see page 82) that enables 40° rotation to the right or left of the hose reel is available on request.



- The adjustable arms can be easily repositioned according to needs (see page 77).



	Article	Relative capacity	Delivery hose	∅ Hose	Inlet connection	Outlet connection
Series 530	530/10	50 l/min	without hose	/	F 1/2"G	F 1/2"G
	530/61	45 l/min	20m (968/20)	13x20	F 1/2"G	M 1/2"G
	530/62	43 l/min	25m (968/25)	13x20	F 1/2"G	M 1/2"G
	530/60	100 l/min	without hose	/	F 1"G	F 1"G
	530/63	87 l/min	12m (978/12)	19x27	F 1"G	M 3/4"G
	530/64	93 l/min	8m (988/08)	25x35	F 1"G	M 1"G
		N° 1 packing m³ 0,120		from kg 19 to 42		

	Article	Relative capacity	Delivery hose	∅ Hose	Inlet connection	Outlet connection
Series 540	540/10	100 l/min	without hose	/	F 1"G	F 1"G
	540/61	85 l/min	15m (978/15)	19x27	F 1"G	M 3/4"G
	540/62	83 l/min	20m (978/20)	19x27	F 1"G	M 3/4"G
	540/63	90 l/min	15m (988/15)	25x35	F 1"G	M 1"G
		N° 1 packing m³ 0,175		from kg 24 to 50		

	Article	Relative capacity	Delivery hose	∅ Hose	Inlet connection	Outlet connection
Series 560	560/10	100 l/min	without hose	/	F 1"G	F 1"G
	560/61	80 l/min	30m (978/30)	19x27	F 1"G	M 3/4"G
	560/62	78 l/min	35m (978/35)	19x27	F 1"G	M 3/4"G
	560/63	76 l/min	40m (978/40)	19x27	F 1"G	M 3/4"G
	560/64	87 l/min	20m (988/20)	25x35	F 1"G	M 1"G
	560/65	85 l/min	30m (988/30)	25x35	F 1"G	M 1"G
		N° 1 packing m³ 0,310		from kg 30 to 80		

OVERALL DIMENSIONS

Series	A	B	C	D	E	F	G	H
530	203	153	220	258	115	550	510	560
540	300	218	228	268	190	550	510	573
560	488	399	238	272	368	522	510	578

